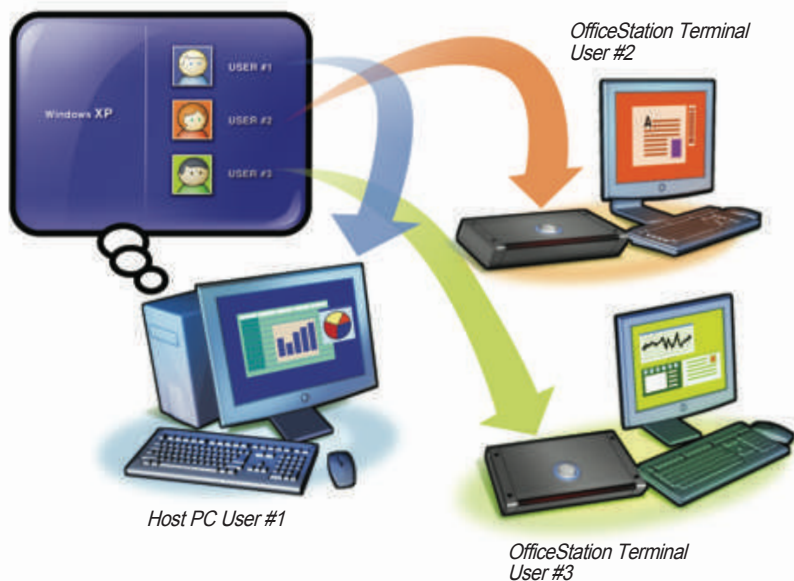


share the resources  
**OfficeStation™ L100**



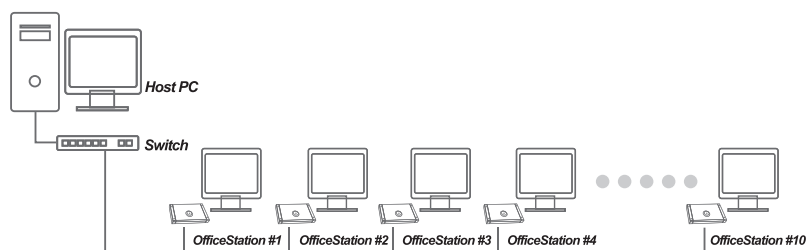
### Overview

The market of server based computing is growing together with the need of companies and end users for individualized, benefit-oriented and low cost IT solution. The PC as Do-it-all weapon for all IT workplaces belongs to the past. Terminal server/thin client solutions have been successfully established and fulfill their task as much lower Total Cost Ownership(TCO).

At the same time they offer additional ecological, ergonomic and security-relevant advantages. The increasing demand for thin clients is a distinct signal for a market differentiation in the traditional PC market. The OfficeStation as all-in-one plug & play ultra thin terminal pushes open the doors to new markets, which remained closed to the server based computing so far due to its complexity. OfficeStation is the ideal option of a terminal product for you to enlarge the number of your workplaces.

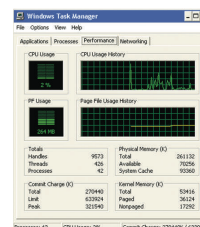
### What is OfficeStation?

OfficeStation is the world's first terminal unit that does not require a CPU, hard-drive, or CD-ROM yet executes as if it's an ordinary PC. With OfficeStation's exclusive UTMA(Ultra Thin Multi-Access™) technology, OfficeStation allows you to expand your existing PC up to 10 computer terminals.



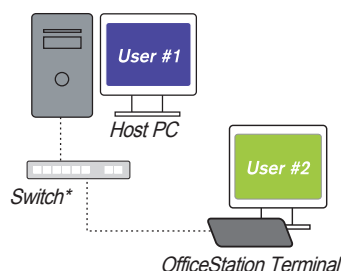
## How Does OfficeStation Work?

Because your existing PC is being under utilized (see CPU usage diagram, right) each OfficeStation is programmed to access the host PC's excess computing power. By utilizing Windows XP/2000's multi-user feature with UTMA technology from Ncomputing, each OfficeStation terminal can operate like a separate PC terminal without decreasing the overall performance of either the host PC or each OfficeStation terminal. Therefore, each OfficeStation unit can run any applications from the host PC independently and securely.



## Network Setting

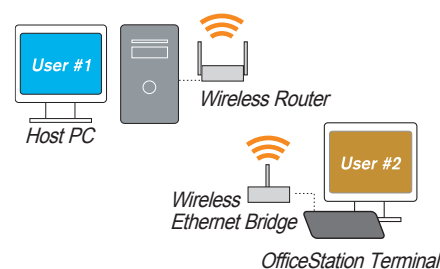
### Home Setting



Enjoy the benefit of additional computing capabilities with just one host PC. Family members can browse the internet and work on reports at the same time without having to fight over the same computer.

\*You can also use HomePlug (via Powerline) adapter instead of CAT5 cable.

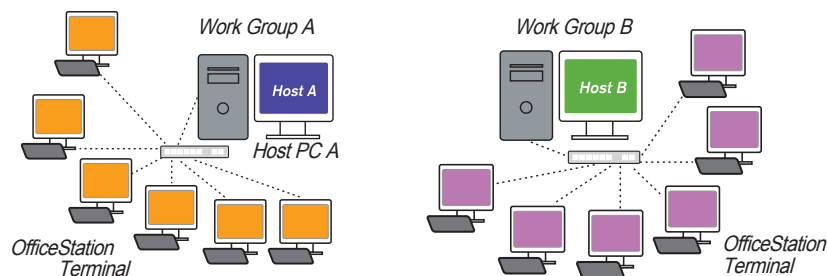
### Wireless Setting



Take the benefit of OfficeStation Solution to the next level by adding wireless protocol.

\*802.11g Wireless router and bridge required.

### Office Setting



Great saving on hardware cost as well as IT maintenance when OfficeStation network terminal solution is implemented. Multiple host PCs can be connected under the same corporate network environment for department/group computing.

## Economic, Ergonomic, Ecological solution

- Economic**
- the reduced administration costs
  - the lower purchasing price
  - the longer product life cycle

- Ergonomic**
- less electromagnetic emission
  - less waste heat
  - less space consumption
  - less noise output

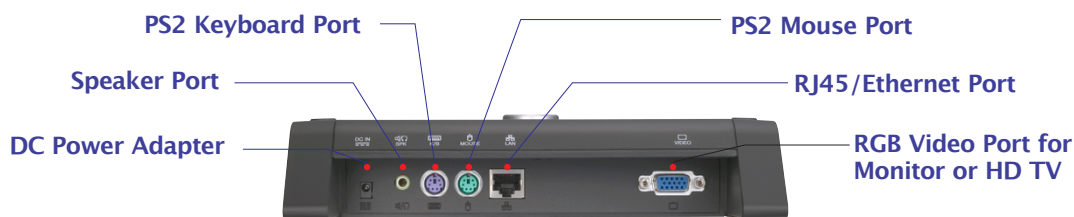
- Ecological**
- less power consumption
  - less electronic hardware parts
  - less hazardous waste for environment

## Benefits of the OfficeStation

- **Cost effective**  
Save up to 80% of your hardware cost versus buying a P4 or equivalent PC, OfficeStation gives any office or home users to expand an existing host PC easily and affordably.
- **No maintenance required**  
You only have to maintain and upgrade the host PC, OfficeStation requires no hardware maintenance.
- **Compatibility**  
OfficeStation will run Windows based applications on your host PC : internet browsing, email, office suites, most games and much more. (except 3D games and legacy applications)
- **Simultaneous Windows operation**  
Both host PC and OfficeStation terminals can run independently and execute same application programs separately. \*Additional software license may be required
- **Small sleek design**  
Space saving design allows more room for your office or desk area.
- **No noise output and low power consumption**  
Quiet operations while saving energy costs (5 watt usage only)
- **Supports high resolution monitor display**  
640 x 480, 800 x 600, 1024 x 768, 1280 x 1024 16 bit color
- **Remote control**  
Because OfficeStation employs TCP/IP based standard Ethernet protocol, you can access your office/ home PC from anywhere in the world via the internet. \*High broadband and public IP may be required
- **Enhanced Security**  
Increased security through own encryption and password protection. With no FDD/HDD/CD/USB Ports, it's safe from outflow PC data, hacking and computer virus.
- **Simple and easy to install and use**  
No terminal server OS and no additional add-on cards required and can be installed simply and easily.
- **Field application usage**  
Especially can be used in office, training center, call center, factory, school, cyber café or government field.

## Hardware Specification

<b>DIMENSION &amp; WEIGHT</b>	215mm(W) x 40mm(H) x 160mm(D), 375g
<b>PROTOCOL &amp; OPERATING SYSTEM</b>	WoIP™ (Windows®-over-IP) for Windows® 2000 Professional Windows® XP Home/Windows® XP Professional installed host PC
<b>RECOMMEND SYSTEM REQUIREMENT</b>	A Host PC with at least : <ul style="list-style-type: none"> <li>• Any PC with 2 GHz processor or higher</li> <li>• 512 MB RAM or above</li> <li>• 60 GB Hard disk drive at 7200 RPM</li> <li>• Microsoft Windows® XP Home/Professional, Windows® 2000 (does not support Windows 98/Me)</li> <li>• Keyboard, Mouse, Monitor, Speaker is required for each station.</li> <li>• 10/100MB FastEthernet switched hub for connecting many stations and PCs (or crossover for 1:1 connection)</li> </ul>



### Headquarter Office

2nd Floor, Daeyoung Bldg, 1423-6, Gwangyang1-Dong,  
Dongan-Gu, Anyang-City, Gyeonggi-Do, Korea 431-870  
TEL : 82-31-422-5157  
FAX : 82-31-422-5158  
Email : sales@ncomputing.com

### Hardware R&D, Techsupport

2nd Floor, Daeyoung Bldg, 1423-6, Gwangyang1-Dong,  
Dongan-Gu, Anyang-City, Gyeonggi-Do, Korea 431-870  
TEL : 82-31-422-5157  
FAX : 82-31-422-5158  
Email : techsupport@ncomputing.com

### NComputing GmbH – Germany

Bahnweg 12, D-91785 Pleinfeld, Germany